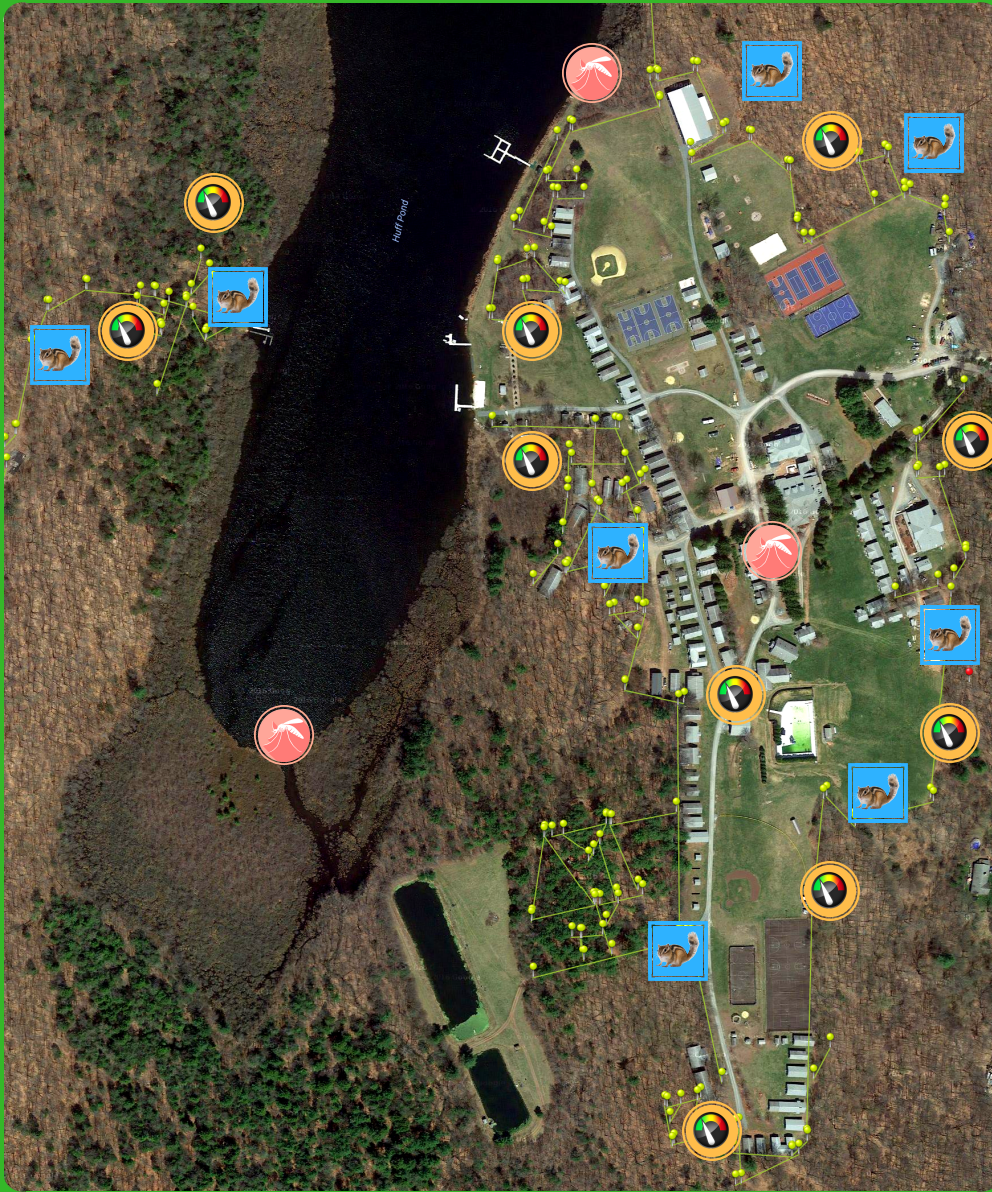




# Public Health Control Program

## 2020 Strategy Overview



**Camp Moshava IO has implemented  
our most advanced program.**

Ivy Oaks Analytics is a public health control company servicing large commercial areas. All products used are EPA approved for recreation areas. While our program achieves a very high level of control we cannot guarantee 100% of ticks, mosquitoes and poison ivy will be eliminated in such large areas.

For more information visit:  
[www.IvyOaksAnalytics.com](http://www.IvyOaksAnalytics.com)

**CERTIFIED  
CAMP**

**MOSQUITO &  
TICK CONTROL  
POISON IVY  
CONTROL**



IVY OAKS ANALYTICS

Proud Partner



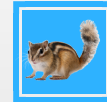
**Mosquito  
Abatement**

We survey the entire property for stagnant water bodies which are analyzed for mosquito breeding. All potential breeding zones are monitored while active breeding zones are treated with a natural product for control.



**Tick Population  
Measurements**

Stations are deployed to measure tick population levels. Each station releases odors that attract ticks. The data gathered from each station helps determine where ticks are most concentrated which allows us to implement a more effective and targeted control program as well as monitor population reductions.



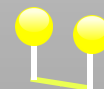
**Host-Oriented  
Tick Control**

Rodent & Chipmunks generally transmit Lyme disease to ticks which is later passed to humans. We have strategically installed devices which treat rodents fur with a liquid to prevent ticks from hosting. The process is similar to flea & tick medication applied to pets & does not harm the rodent. This method shifts rodents from infecting ticks with disease to instead exterminating ticks. Yes, the chipmunks & mice here help control ticks.



**Tick Population  
Lab Analysis**

Collected ticks are laboratory tested to determine if any are infected with diseases such as Lyme & similar illnesses allowing us to monitor infection rates.



**Perimeter  
Treatment Zone**

The neon yellow lines represent our perimeter treatment zone that we inspect monthly for poison ivy, mosquito breeding activity, and proactively treat for control. This established a protective barrier surrounding activity areas where threats are suppressed.



**IVY OAKS ANALYTICS**



**GLOBAL  
LYME  
ALLIANCE**